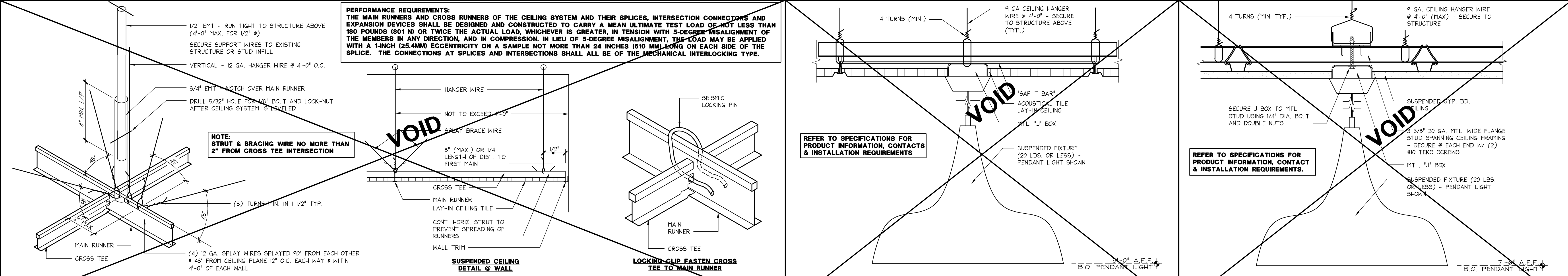
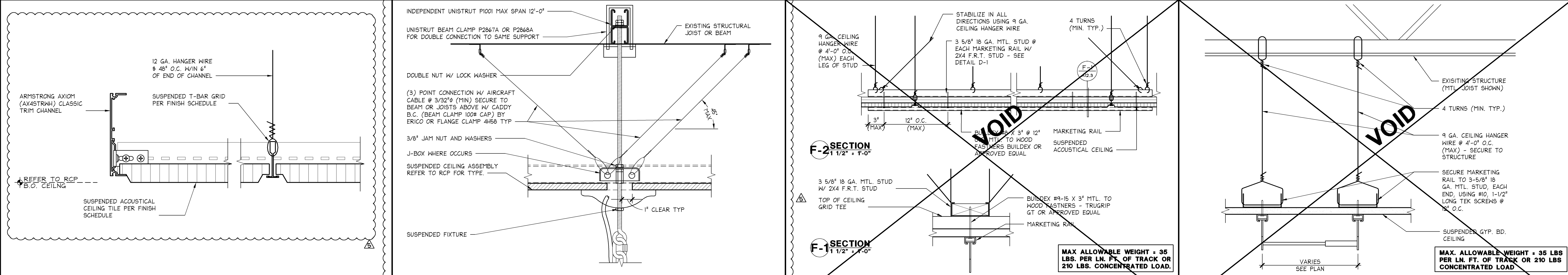


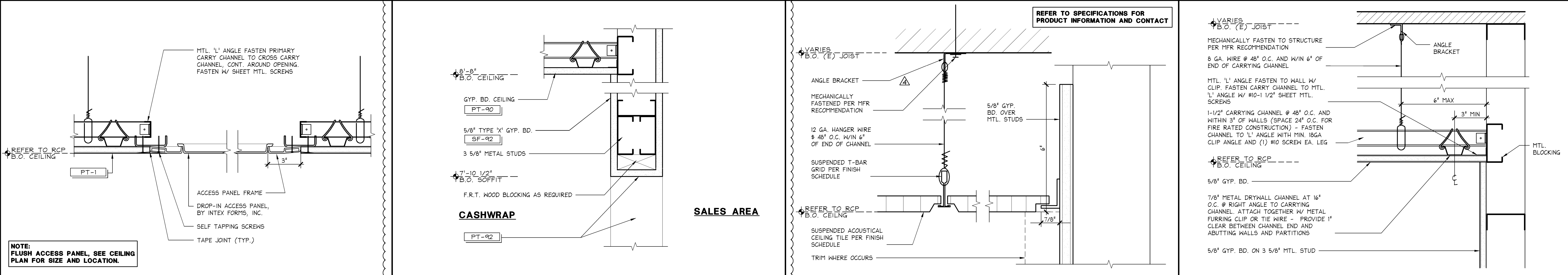
GYP. BD. CEILING SUSPENSION SYSTEM (SEISMIC)	420-A123-M00-DETL	08.14.09	6\"/>
--	-------------------	----------	-------



LAY-IN CEILING SUSPENSION SYSTEM	420-A123-L00-DETL	08.14.09	3\"/>
----------------------------------	-------------------	----------	-------



BREAK AREA SUSPENDED CEILING	420-A123-P00-DETL	08.14.09	6\"/>
------------------------------	-------------------	----------	-------



ACCESS PANEL @ GYP. BD. CEILING	420-A123-N00-DETL	08.14.09	3\"/>
---------------------------------	-------------------	----------	-------

Shremshock Architects, Inc.
6150 S. Sandburg Rd., Westerville, OH 43081
T: 614 545 4550 | F: 614 545 4555 | shremshock.com
Gerald S. Shremshock, Architect
Timothy J. Shremshock, Architect

ELITE CONSTRUCTION GROUP
LAKE JACKSON, TX
PHONE: 979-284-0712
NOTE: THESE PRINTS HAVE BEEN
REDUCED BY 50 PERCENT. SCALE
WILL BE 50 PERCENT OF WHAT IS
NOTED ON PLANS

limitedbrands

LIMITED STORE PLANNING, INC.
d/b/a STORE DESIGN & CONSTRUCTION
Three Limited Parkway • Columbus, Ohio 43230
Telephone: 614.415.7000 • Fax: 614.415.7349

24200161

BATH & BODY WORKS
THE GALLERIA II
SPACE INC., 15860
ROGERS RD., HOUSTON, TX 77056

PKG 1+
14159
FULL REMODEL
EASTON-G
00061216
A/E PROJECT #:

PROJECT INFORMATION:

REVISIONS:

NO.	REVISION	DATE
1	BUILDING DEPARTMENT COMMENTS	04/11/14
2	DESIGN CHANGES / LANDLORD COMMENTS	05/26/14
3	MASTERS UPDATES	06/27/14
4	DESIGN CHANGES	07/24/14

DATE ISSUED: 3/7/14
DESIGNED BY: SB
DRAWN BY: JLH
CHECKED BY: RHW

CEILING & LIGHTING DETAILS

DRAWING NUMBER:
A12.3